

Tiger Mono-facial

375-395 Watt

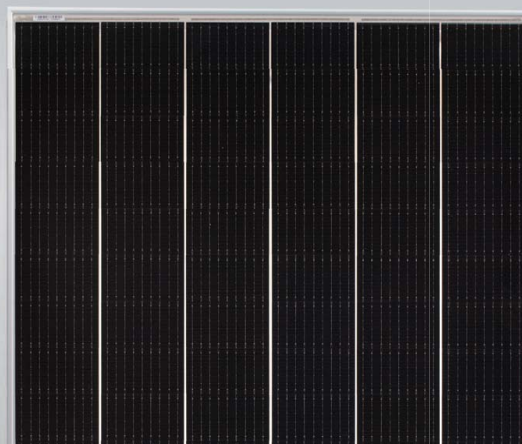
Tiling Ribbon (TR) Technology

Positive power tolerance of 0~+3%

ISO9001:2015, ISO14001:2015, ISO45001:2018
certified factory

IEC61215, IEC61730 certified product

N-Type



KEY FEATURES



TR technology + Half Cell

TR technology with Half cell aims to eliminate the cell gap to increase module efficiency (mono-facial up to 20.69%).



Low Light Induced Degradation

The N-type cell shows extremely low light induced degradation (LID) performance when comparing with the P-type cell.



9BB instead of 5BB

9BB technology decreases the distance between bus bars and finger grid line which is benefit to power increase.



Higher lifetime Power Yield

1% first year degradation,
0.4% linear degradation



Best Warranty

15 year product warranty,
30 year linear power warranty



Better low-light performance

Excellent performance in low-light environments
(e.g. early morning, dusk, and cloud, etc.)



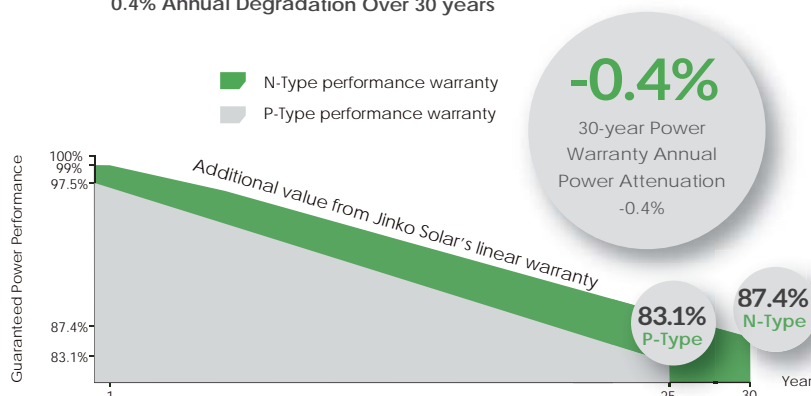
Severe Weather Resilience

Certified to withstand: wind load (2400 Pascal) and snow load (5400 Pascal).

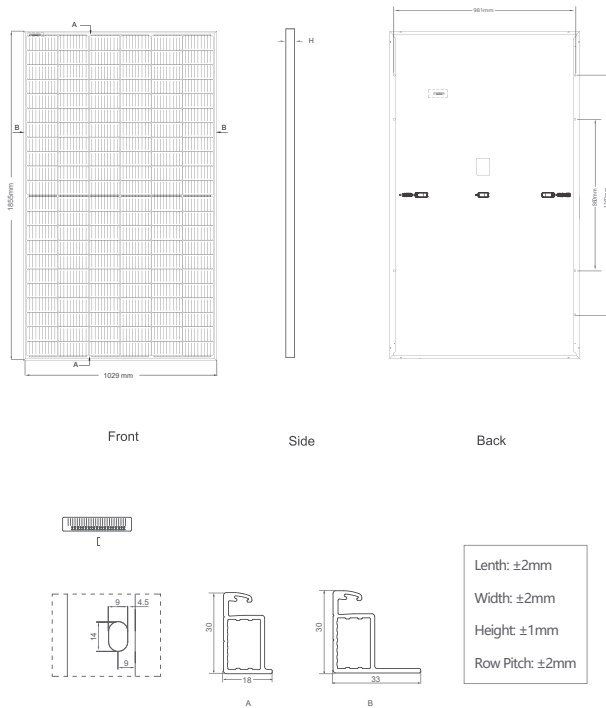


LINEAR PERFORMANCE WARRANTY

15 Year Product Warranty 30 Year Linear Power Warranty
0.4% Annual Degradation Over 30 years



Engineering Drawings

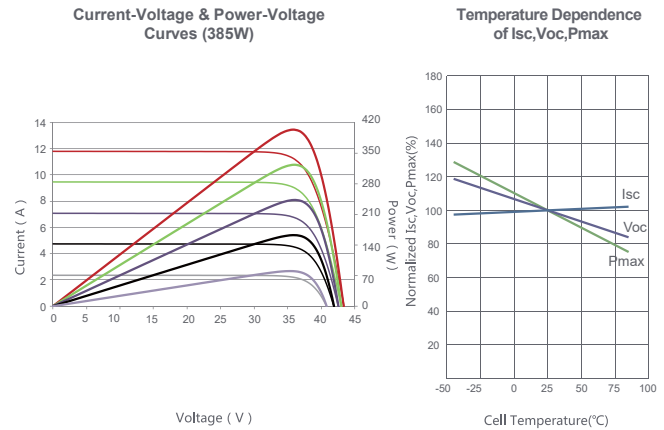


Packaging Configuration

(Two pallets = One stack)

35pcs/pallets, 70pcs/stack, 840pcs/ 40'HQ Container

Electrical Performance & Temperature Dependence



Mechanical Characteristics

Cell Type	N type Mono-crystalline
No. of cells	132 (2×66)
Dimensions	1855×1029×30mm (73.03×40.51×1.18 inch)
Weight	20.8 kg (45.86 lbs)
Front Glass	3.2mm, Anti-Reflection Coating, High Transmission, Low Iron, Tempered Glass
Frame	Anodized Aluminium Alloy
Junction Box	IP67 Rated
Output Cables	TUV 1×4.0mm ² (+): 290mm, (-): 145 mm or Customized Length

SPECIFICATIONS

Module Type	JKM375N-6RL3 JKM375N-6RL3-V		JKM380N-6RL3 JKM380N-6RL3-V		JKM385N-6RL3 JKM385N-6RL3-V		JKM390N-6RL3 JKM390N-6RL3-V		JKM395N-6RL3 JKM395N-6RL3-V	
	STC	NOCT	STC	NOCT	STC	NOCT	STC	NOCT	STC	NOCT
Maximum Power (Pmax)	375Wp	280Wp	380Wp	283Wp	385Wp	287Wp	390Wp	291Wp	395Wp	295Wp
Maximum Power Voltage (Vmp)	35.92V	33.05V	35.99V	33.18V	36.05V	33.26V	36.11V	33.39V	36.18V	33.51V
Maximum Power Current (Imp)	10.44A	8.46A	10.56A	8.54A	10.68A	8.63A	10.80A	8.71A	10.92A	8.79A
Open-circuit Voltage (Voc)	43.49V	41.05V	43.58V	41.13V	43.66V	41.21V	43.75V	41.29V	43.92V	41.45V
Short-circuit Current (Isc)	11.23A	9.07A	11.33A	9.15A	11.43A	9.23A	11.53A	9.31A	11.63A	9.39A
Module Efficiency STC (%)	19.65%		19.91%		20.17%		20.43%		20.69%	
Operating Temperature(°C)	-40°C~+85°C									
Maximum system voltage	1000/1500VDC (IEC)									
Maximum series fuse rating	20A									
Power tolerance	0~+3%									
Temperature coefficients of Pmax	-0.34%/°C									
Temperature coefficients of Voc	-0.28%/°C									
Temperature coefficients of Isc	0.048%/°C									
Nominal operating cell temperature (NOCT)	45±2°C									

* STC: Irradiance 1000W/m² Cell Temperature 25°C

AM=1.5

NOCT: Irradiance 800W/m² Ambient Temperature 20°C

AM=1.5

Wind Speed 1m/s

* Power measurement tolerance: ± 3%

The company reserves the final right for explanation on any of the information presented hereby. TR JKM375-395N-6RL3-(V)-A1.1-EN

Tiger Mono-facial

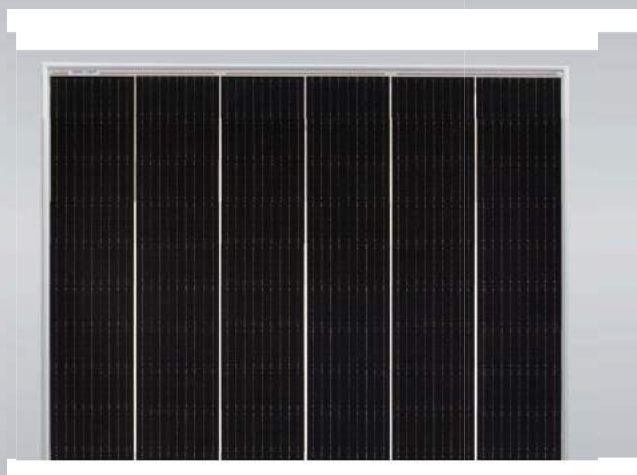
455-475 Watt

Tiling Ribbon (TR) Technology

Positive power tolerance of 0~+3%

ISO9001:2015, ISO14001:2015, ISO45001:2018
certified factory

IEC61215, IEC61730 certified product



KEY FEATURES



TR technology + Half Cell

TR technology with Half cell aims to eliminate the cell gap to increase module efficiency (mono-facial up to 21.16%)



9BB instead of 5BB

9BB technology decreases the distance between bus bars and finger grid line which is benefit to power increase.



Higher lifetime Power Yield

2% first year degradation,
0.55% linear degradation



Best Warranty

12 year product warranty,
25 year linear power warranty



Avoid debris, cracks and broken gate risk effectively

9BB technology using circular ribbon that could avoid debris, cracks and broken gate risk effectively



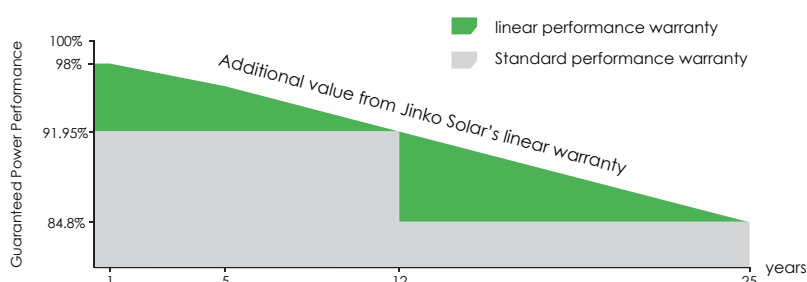
Severe Weather Resilience

Certified to withstand: wind load (2400 Pascal) and snow load (5400 Pascal).

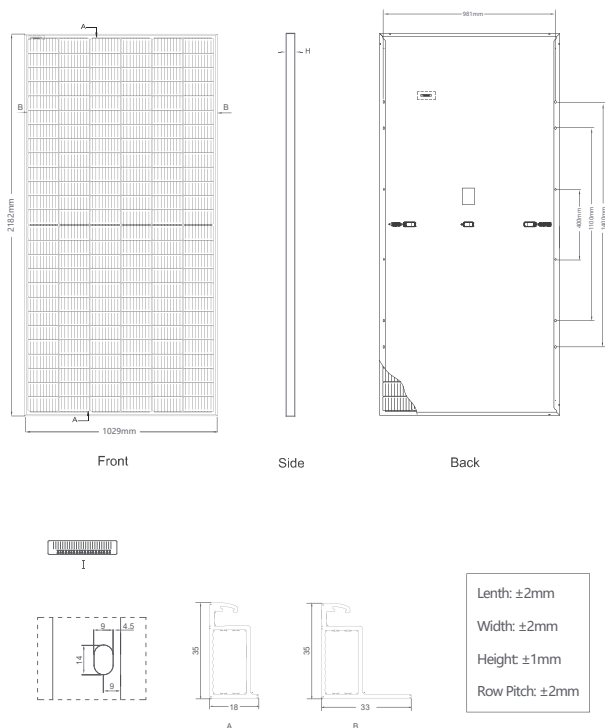


LINEAR PERFORMANCE WARRANTY

12 Year Product Warranty • 25 Year Linear Power Warranty
0.55% Annual Degradation Over 25 years



Engineering Drawings

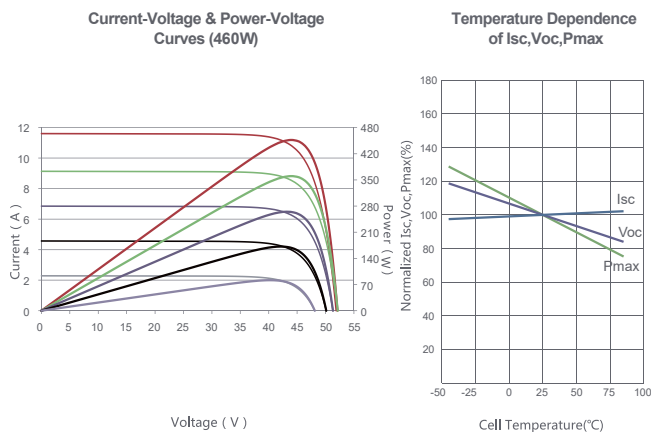


Packaging Configuration

(Two pallets = One stack)

31pcs/pallets, 62pcs/stack, 620pcs/ 40'HQ Container

Electrical Performance & Temperature Dependence



Mechanical Characteristics

Cell Type	P type Mono-crystalline
No. of cells	156 (2×78)
Dimensions	2182×1029×35mm (85.91×40.51×1.38 inch)
Weight	25.0 kg (55.12 lbs)
Front Glass	3.2mm, Anti-Reflection Coating, High Transmission, Low Iron, Tempered Glass
Frame	Anodized Aluminium Alloy
Junction Box	IP67 Rated
Output Cables	TUV 1×4.0mm ² (+): 290mm, (-): 145 mm or Customized Length

SPECIFICATIONS

Module Type	JKM455M-7RL3		JKM460M-7RL3		JKM465M-7RL3		JKM470M-7RL3		JKM475M-7RL3	
	JKM455M-7RL3-V		JKM460M-7RL3-V		JKM465M-7RL3-V		JKM470M-7RL3-V		JKM475M-7RL3-V	
	STC	NOCT	STC	NOCT	STC	NOCT	STC	NOCT	STC	NOCT
Maximum Power (Pmax)	455Wp	339Wp	460Wp	342Wp	465Wp	346Wp	470Wp	350Wp	475Wp	353Wp
Maximum Power Voltage (Vmp)	42.97V	39.32V	43.08V	39.43V	43.18V	39.58V	43.28V	39.69V	43.38V	39.75V
Maximum Power Current (Imp)	10.59A	8.61A	10.68A	8.68A	10.77A	8.74A	10.86A	8.81A	10.95A	8.89A
Open-circuit Voltage (Voc)	51.60V	48.70V	51.70V	48.80V	51.92V	49.01V	52.14V	49.21V	52.24V	49.31V
Short-circuit Current (Isc)	11.41A	9.22A	11.50A	9.29A	11.59A	9.36A	11.68A	9.43A	11.77A	9.51A
Module Efficiency STC (%)	20.26%		20.49%		20.71%		20.93%		21.16%	
Operating Temperature(°C)	-40°C~+85°C									
Maximum system voltage	1000/1500VDC (IEC)									
Maximum series fuse rating	20A									
Power tolerance	0~+3%									
Temperature coefficients of Pmax	-0.35%/°C									
Temperature coefficients of Voc	-0.28%/°C									
Temperature coefficients of Isc	0.048%/°C									
Nominal operating cell temperature (NOCT)	45±2°C									

* STC: ☀ Irradiance 1000W/m² 📏 Cell Temperature 25°C ☁ AM=1.5
 NOCT: ☀ Irradiance 800W/m² 📏 Ambient Temperature 20°C ☁ AM=1.5 🌀 Wind Speed 1m/s
 * Power measurement tolerance: ± 3%

The company reserves the final right for explanation on any of the information presented hereby. TR JKM455-475M-7RL3-(V)-A2-EN